

Incomplete Vehicle Document (IVD) Replacement Process

The Incomplete Vehicle Document (IVD) is a Regulatory document that must be retained by the Final Stage Manufacturer (it does not remain in the vehicle to the end use customer). The Final Stage Manufacturer is responsible for retaining this document for each vehicle that has been modified/upfit.

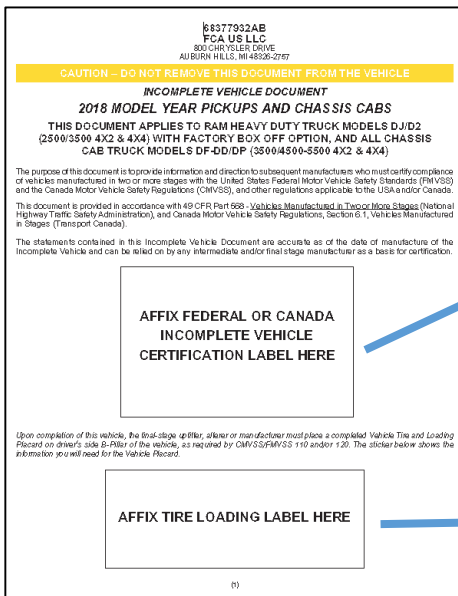
The document itself is generic for the vehicle line (i.e. Ram Trucks have (1) IVD, Ram ProMaster has (1) IVD, etc). The portion of the documents that make them unique are the CERT and Tire Loading labels. These labels are printed and adhered to the generic IVD documents at the FCA assembly plants, then installed into the vehicles prior to shipment.

In the event that the Incomplete Vehicle Document has become damaged/unusable or has been lost the following procedure will allow you to replace it free of charge.

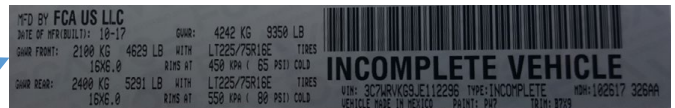
- 1) Visit <https://www.ramtrucks.com/ram-commercial/body-builders-guide.html> and print out the appropriate IVD (ensure correct Model and Model Year for your vehicle)
- 2) Photograph the CERT and Tire Loading Labels from your vehicle
- 3) Print out CERT and Tire Loading Labels and attach to the IVD
- 4) Retain IVD for records per Regulatory requirement

Should you have any questions please contact us at either RamBBG@Ramtrucks.com or the Contact Us section of the FCA Body Builders Guide.

IVD (example)



CERT Label
Located on Driver's Door



Tire Loading Label
Located on B-Pillar, Driver's Side

