

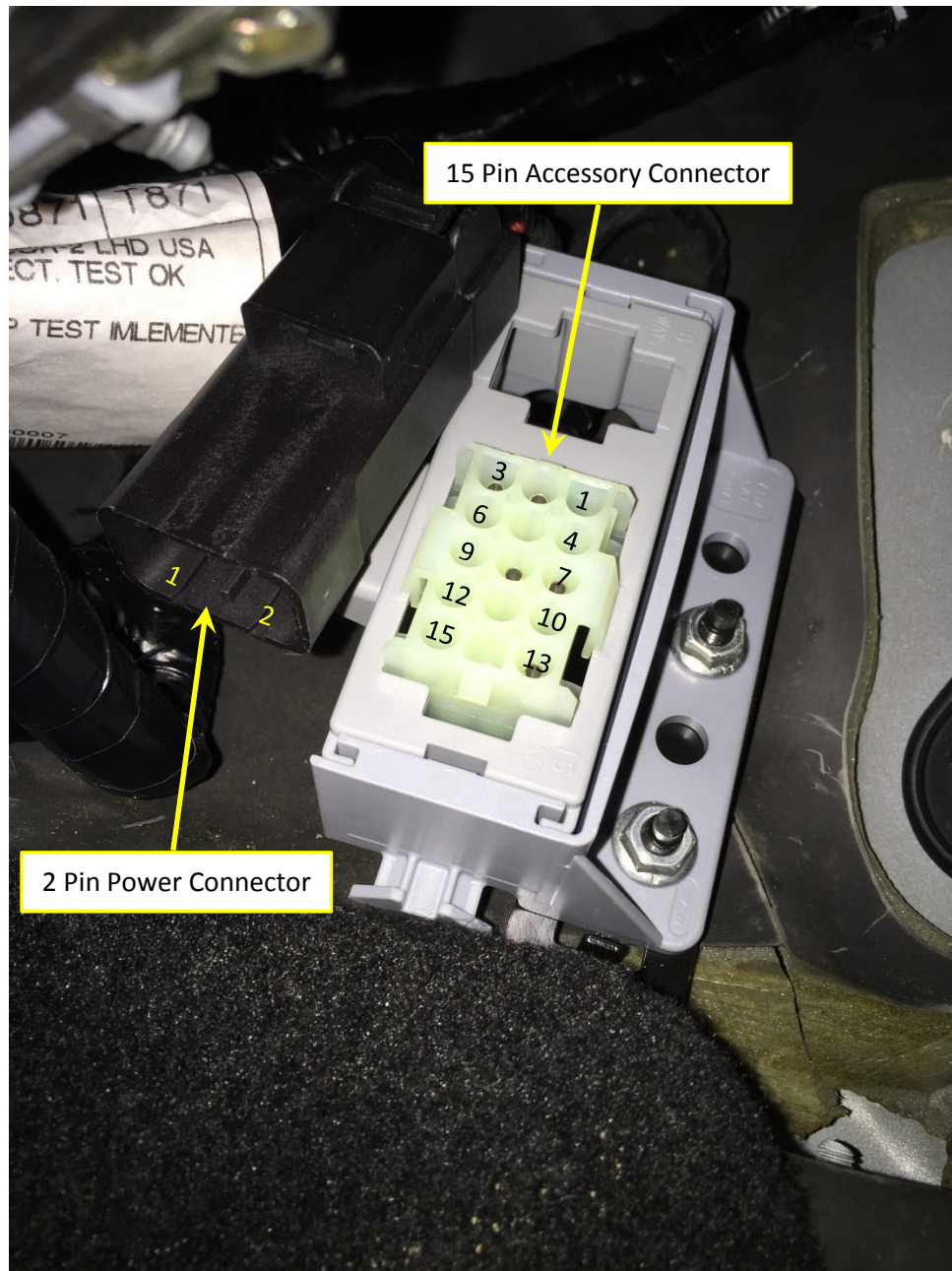
PROMASTER CITY UP FITTER CONNECTOR

Up fitter connectors are available as an orderable option. (Sales code BC3) This option **cannot be added** at the aftermarket or by the dealer. The connectors are located behind the driver's side knee blocker.



PROMASTER CITY UP FITTER CONNECTOR

With this option, there is a 15 pin accessory connector and a 2 pin power connector.



PROMASTER CITY UP FITTER CONNECTOR

15 Way Accessory Connector

15 Way Accessory Connector and Terminals Manufactured by **Tyco Electronics**

Vehicle Harness Connector: Tyco P/N **926647-1**

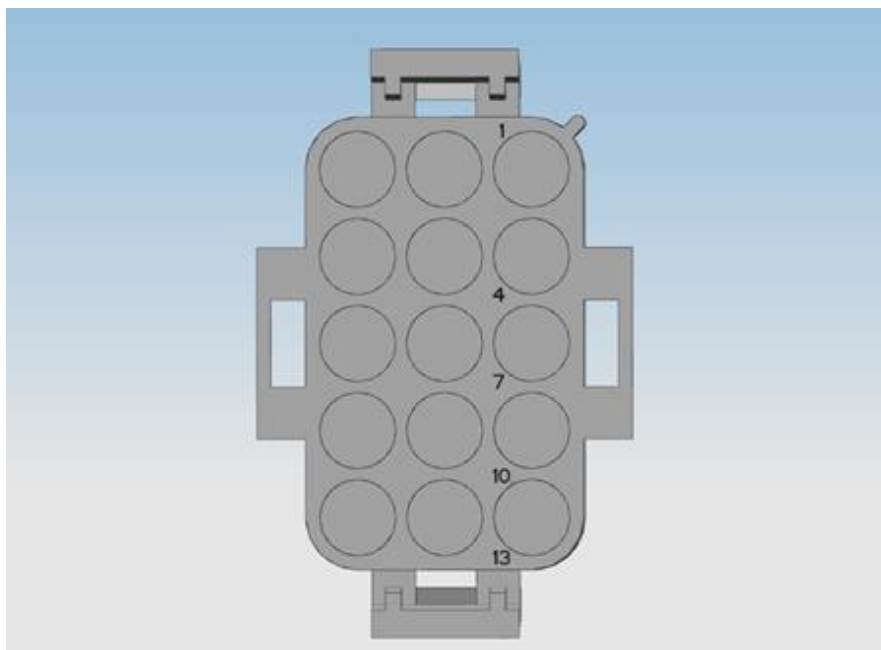
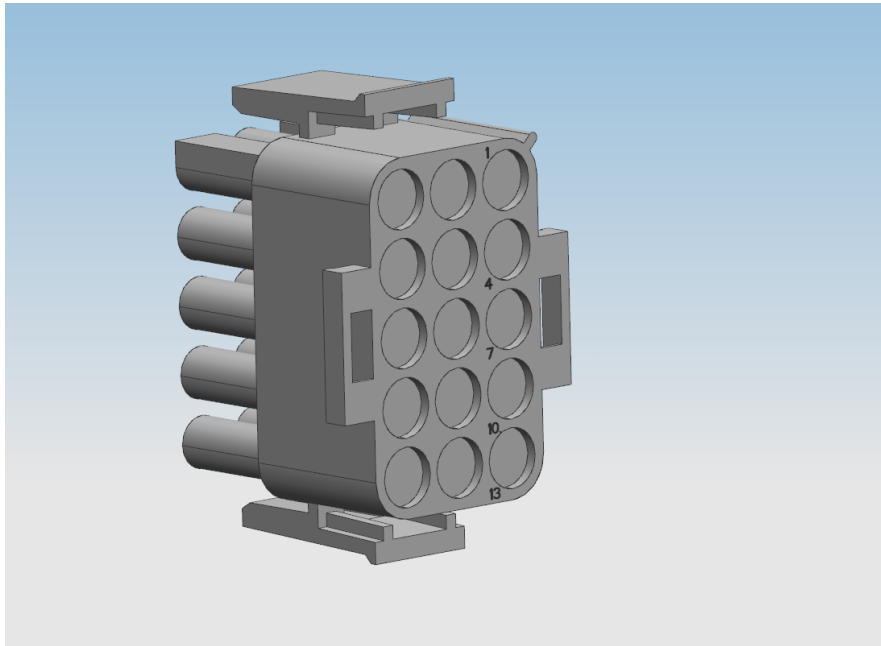
Mating Connector: Tyco P/N **1-480710-0** (up fitter provided)

Mating Connector Terminal: Tyco P/N **350218-1** (up fitter provided)

PIN	Circuit Function	Min Wire Size (mm ²)	Wire Color	Notes
2	Aux Run Relay Control (LSD)	0.35	BR/BK	Alternator System Charging I Process Signal
3	Vehicle Speed Output (VSO)	0.35	BR/LG	5mA Max Current (0 to 5V Square Wave. 50% Duty Cycle. Variable Frequency. 0 V at 0MPH. Vspd (MPH) = F (HZ) *.6 (MPH/HZ) Round to nearest MPH)
7	Courtesy Lamp Feed	0.5	RD/LG	Power supply (+) for timed ceiling light 15' with key off (Pmax= 20W at 12V)
8	Cargo Lamp (Dimmer)	0.75	WT/LG	Ceiling light control (-) Pmax=20W at 12 V
13	Ignition Feed	0.5	BL/YL	600mA Max Current 12V with Ignition on 5A Fuse CBC FAO

Note: Remaining Pins Not Connected

The following views are of the wire insertion side of the up fitter provided mating connector. (Tyco P/N **1-480710-0**) Connector shell and terminals can be found through various distributors on the internet.



PROMASTER CITY UP FITTER CONNECTOR

2 Way Power Connector

Power Connector and Terminals Manufactured by **MTA**

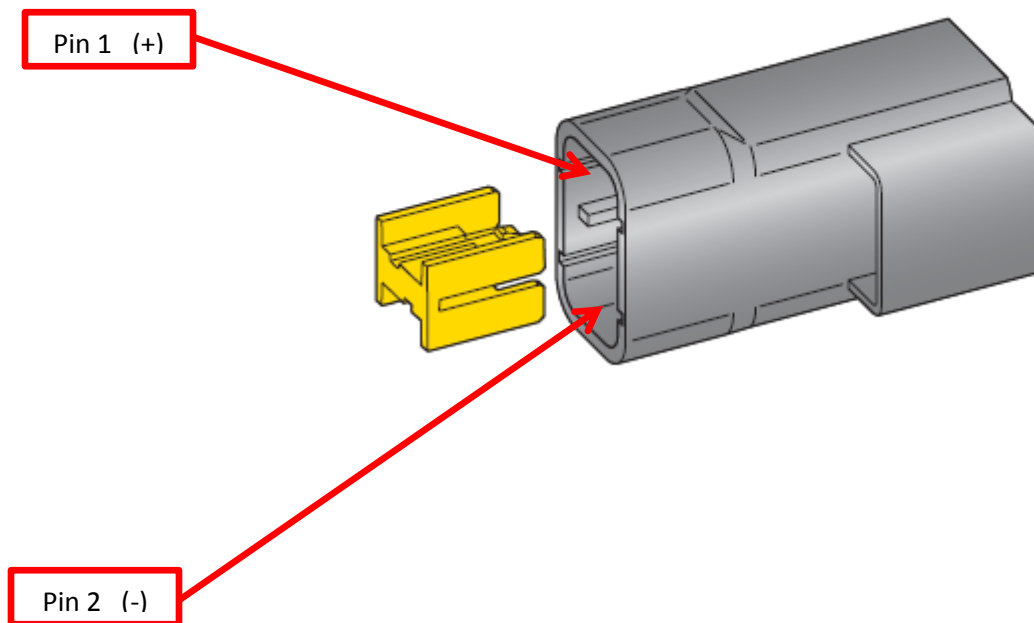
Vehicle Harness Connector: MTA P/N **4440300**

Mating Connector: MTA P/N **4440400** (provided by up fitter)

Mating Connector Terminal MTA P/N **M800** (provided by up fitter)

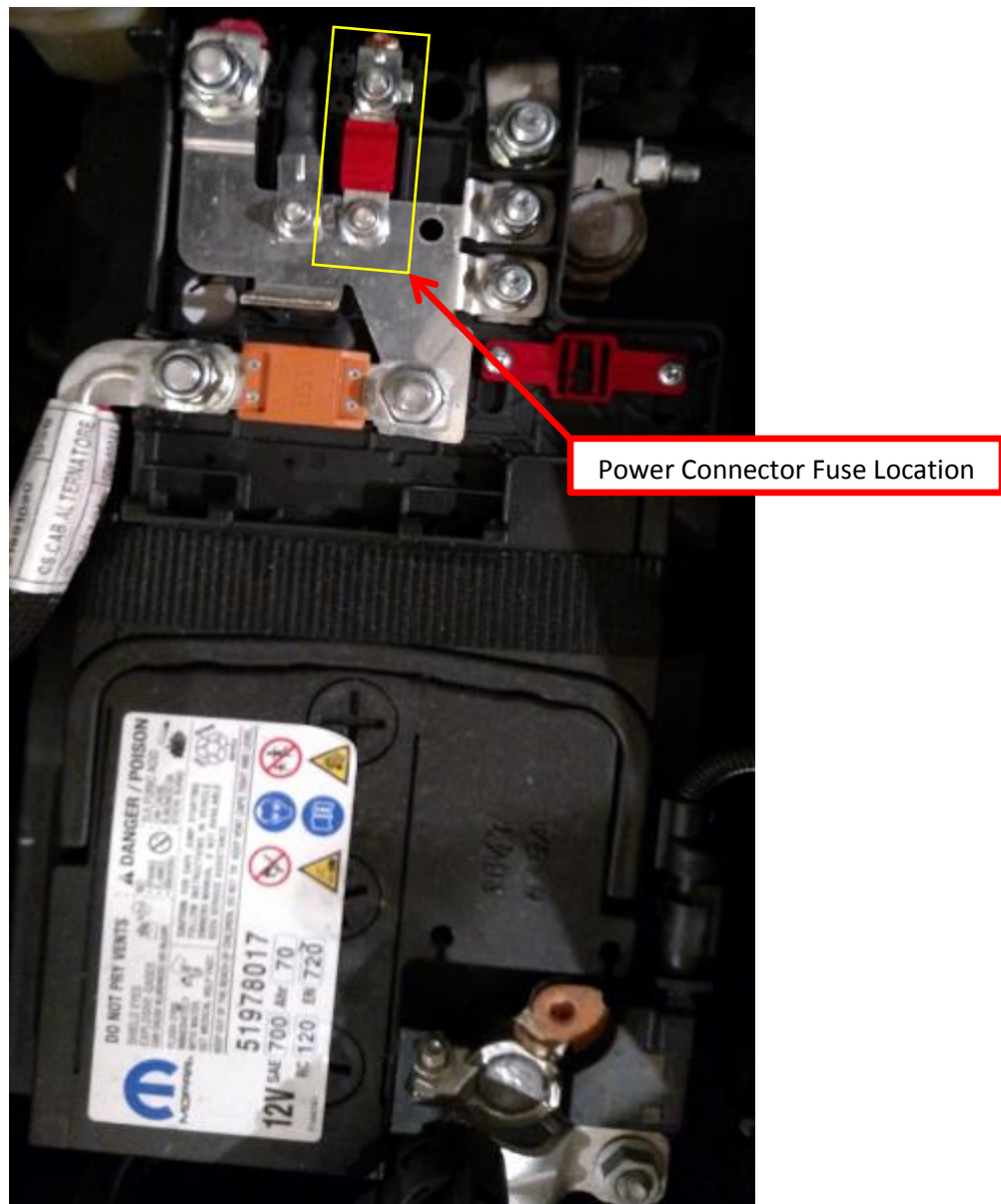
PIN	Circuit Function	Min Wire Size (mm ²)	Wire Color	Notes
1	12 Volt Supply	10	RD	Fused For 50 Amps
2	Power Ground	10	BK	Max Continuous Current 53 Amps

The following view is of the wire insertion side of the up fitter provided mating connector. (MTA P/N **4440400**) Connector shell and terminals can be found in the MTA catalog on the MTA web site.



PROMASTER CITY UP FITTER CONNECTOR

The number and size of the fuses attached to the main power bus in the battery box will vary depending upon vehicle option content. The fuse for the power connector will always be 50 amps and will always be in the location shown below.



PROMASTER CITY UP FITTER CONNECTOR