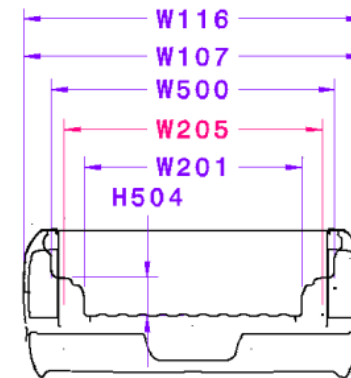
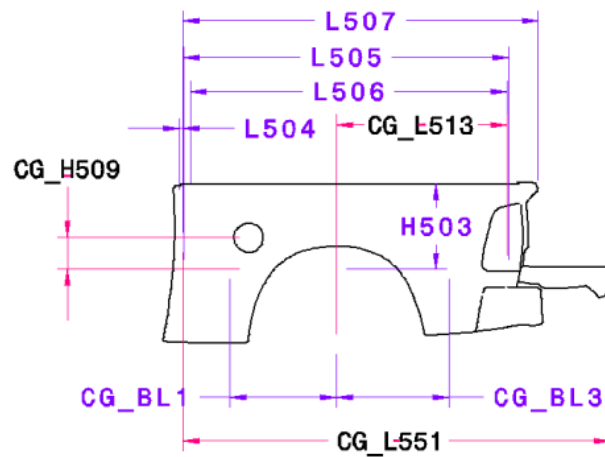
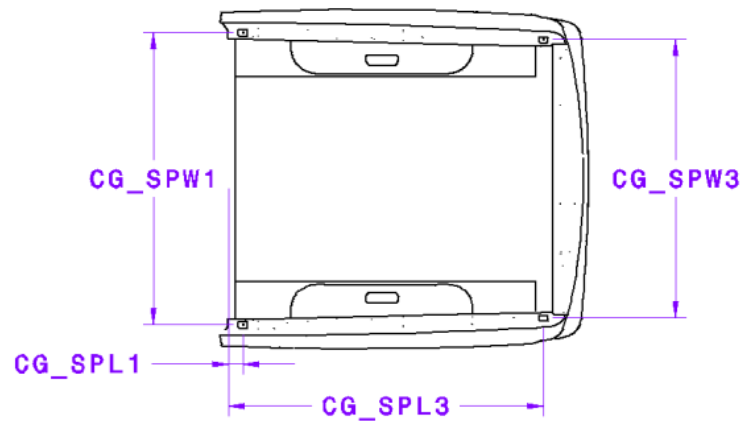


## 6'4" Box



**BBG TEMPLATE**

## 6'4" Box

Code	Description	Metric	English
CG_BHS	Bulkhead Opening Size*	38.0 X 106.0	1.5 X 4.2
CG_BL1	Front Bulkhead to Rear Axle	633.2 mm	24.9 in
CG_BL3	Rear Bulkhead to Rear Axle	669.2 mm	26.3 in
CG_SPL1	Front of Bed to Front Pocket	86.5 mm	3.4 in
CG_SPL3	Front of Bed to Rear Pocket	1874.6 mm	73.8 in
CG_SPS	Stake Pocket Opening Size*	50.0 X 35.0	2.0 X 1.3
CG_SPW1	Width between Front Pockets	1737.7 mm	68.4 in
CG_SPW3	Width between Rear Pockets	1654.1 mm	65.1 in
CG_H509	Box Floor to Center of Fuel Door	189.1 mm	7.4 in
CG_L513	Rear Axle to Inside Box at Rear	1016.3 mm	40.0 in
CG_L551	Front of Box to end of open Tailgate	2546.3 mm	100.2 in
H503	Pickup Body Height	511.1 mm	20.1 in
H504	Wheelhouse height	228.2 mm	9.0 in
L504	Cab to Pickup Body	21.0 mm	0.8 in
L505	Pickup Body Length at Floor	1938.5 mm	76.3 in
L506	Pickup Body Length at Top of Body	1887.1 mm	74.3 in
L507	Pickup Body Overall Length	2116.3 mm	83.3 in
V5	Open Truck Cargo Volume Index-Maximum	1.6 m <sup>3</sup>	57.5 cuFt
W107	Fender Width - Rear	2013.8 mm	79.3 in
W116	Body Width - Maximum	2017.4 mm	79.4 in
W201	Cargo Width-Wheelhouse	1295.4 mm	51.0 in
W205	Tailgate Opening	1535.3 mm	60.4 in
W500	Cargo Width at Rear	1686.9 mm	66.4 in

BBG TEMPLATE

