

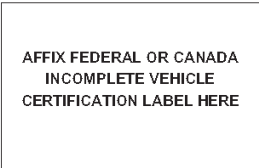
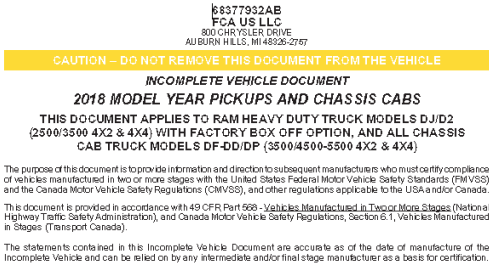
The Tire Loading Labels are printed and adhered to the generic IVD documents at the FCA assembly plants, then installed into the vehicles prior to shipment. The Final Stage Manufacturer is responsible for the accurate seating capacity, tire, and weight information to be printed for the completed vehicles.

Seating Capacity and Cargo Weight information will NOT be on the Tire Loading Label when an INCOMPLETE VEHICLE leaves the FCA assembly plant.

It is the Final Stage Manufacturers responsibility to install a new Tire Loading Label on INCOMPLETE VEHICLES, including the designated seating capacity, tire information, and vehicle capacity weight information. The new label is placed over the existing label on the vehicle (either driver’s door OR driver’s side B-Pillar). It is important that the label covers the original label as much as possible.

Should you have any questions please contact us at either [rambbg@ramtrucks.com](mailto:rambbg@ramtrucks.com) or the Contact Us section of the FCA Body Builders Guide.

**IVD (Example)**



Upon completion of this vehicle, the final-stage up-fitter, assembler or manufacturer must place a completed Vehicle Tire and Loading Placard on driver's side B-Pillar of the vehicle, as required by CMVSS/FMVSS 110 and/or 120. The sticker below shows the information you will need for the Vehicle Placard.



**Tire Loading Label**  
(As it Leaves FCA Plant)

