
Introduction

The factory installed snowplow preparation group (Sales Code AHD) is **required** for Ram 1500 (DT) if a snowplow is installed. Snowplow installation is only approved on specified models. See the SNOWPLOW PACKAGE AVAILABILITY chart found under the SNOW PLOW INSTALLATION topic of the Body Builder's Guide. The normal warranty applies to Ram trucks that have aftermarket snowplows installed in accordance with these guidelines.

Maximum Vehicle Loading Requirements

Installation of a snowplow and the mounting hardware may result in a vehicle weight distribution or a front axle loading which is detrimental to brake performance or which exceeds the front GAWR. The following load requirements are applicable:

1. The loaded vehicle, including all aftermarket accessories, snowplow system, driver, and cargo must not exceed the Gross Vehicle Weight Rating (GVWR) and Front or Rear Gross Axle Weight Ratings (GAWR) specified on the Safety Compliance Certification label located in the driver's door opening. See Figure 1.
2. The empty truck with all permanently attached accessories and snowplow components must not exceed 62 percent of its total weight on the front axle to comply with FMVSS/CMVSR 105 Brake Certification.
3. Permanently attached snowplow parts are those parts not easily removed when the blade is removed. The permanently attached parts are: sub-frame, hydraulic pump, hydraulic lift cylinder, lamps, wiring, snowplow controls, etc.

If the front axle loading exceeds either 62 percent of the empty truck total weight or the front GAWR, ballast compensating weight must be securely attached at the rear of the truck to bring front axle weight within weight specifications as defined above.

Notes for Light Duty Snowplows

- Snowplow prep is not available on Ram 1500 Classic. (DS) Snowplow installation for 1500 Classic is **not approved**.
- At any time with the blade attached, the maximum number of occupants in the truck must not exceed one driver.
- Under Any Circumstances, vehicles should NOT exceed GVWR (Gross Vehicle Weight Rating) and Front or Rear GAWRs. (Gross Axle Weight Ratings)
- Cargo capacity varies based on vehicle options. See your vehicle's payload value listed on the certification label located on the driver's door opening. See Figure 1.
- Ballast should be securely attached inside the box at 9 inches from the rear tailgate.

RAM 1500 SNOWPLOW INSTALLATION GENERAL GUIDELINES

Notes for Light Duty Snowplows (Cont'd)

- The total weight of permanently attached hardware should not exceed 65 lbs.
- Max snowplow weight should not exceed the values for the models shown on the SNOWPLOW PACKAGE AVAILABILITY CHARTS found under the SNOW PLOW INSTALLATION topic of the Body Builder's Guide.

Attention

The snowplow approved vehicles shown in the Body Builder's Guide document titled SNOWPLOW PACKAGE AVAILABILITY CHARTS are the manufacturer recommendations based on maximum vehicle option content. The maximum allowable plow weight can be determined by the dealer / supplier / manufacturer. In all cases, the loaded vehicle weight, including the snowplow system, all aftermarket accessories, driver, options, and cargo, must not exceed either the Gross Vehicle Weight Rating (GVWR) or Gross Axle Weight Ratings. (GAWR) The GVWR and GAWR weights are specified on the Safety Compliance Certification label located in the driver's side door opening. See Figure 1.

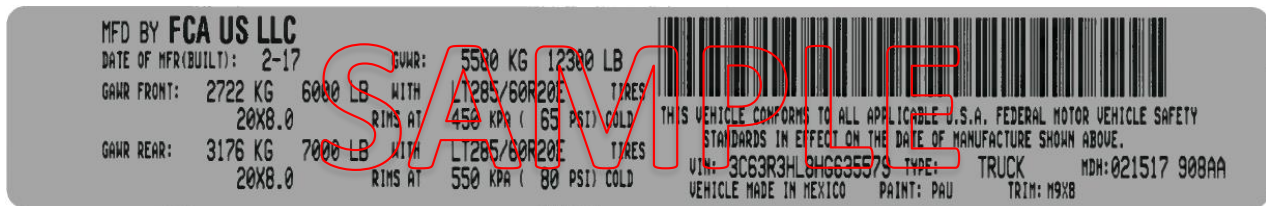


Figure 1 - Safety Compliance Certification Label

RAM 1500 SNOWPLOW INSTALLATION GENERAL GUIDELINES